

lighting news from universal fibre optics

Gran Casino Ajarafe

Universal Fibre Optics were selected by the Oxfordshire office of lighting design practice, **DPA**, to provide fibre optic lighting effects for the **Gran Casino Aljarafe** development in Seville, Spain. The interior design was provided by **FDA Design** of London.

A number of areas used fibre optics to provide ceiling starfields which were varied in their effect by using different fibres and end fittings to provide a unique look to each area. The ceiling above the casino floor used crystal fittings which

give a bright point of light and an interesting patterned cast around each fitting. In the bar and above slot machines, bare-ended 1mm polymer fibre was used to give small star-like points of light. The reception area used UFO12D lenses to give larger diffuse points of light. The light sources used are 150W metal halide. These provide a useful 6000 hours between re-lamping helping to reduce maintenance costs.

The fibre optics were manufactured and fitted by Universal Fibre Optics.



Above: a high intensity starry effect created over gaming tables with crystal fittings .

Below: a densely populated and dramatic star ceiling effect above a bar seating area.



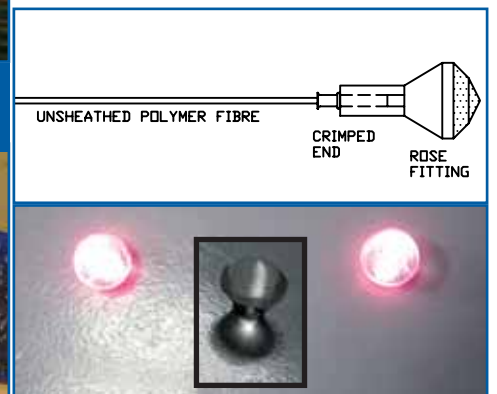
Focussed light for London garden feature



The **UFO 10DBRS** bracket fitting with ground spike has been used to great effect to light the steps and waterfall at a residence in Kensington Park Gardens, London (above). The lighting was designed by **Lighting Design International** of London. The spiked fitting allows the light points to be hidden in the shrubbery.

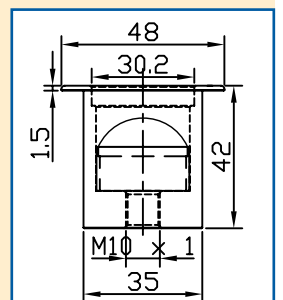
Rose Lens

The **Rose Lens** offers a new effect for high-mounted star effects and decorative panels. It is also ideal for making internal signage which is to be seen from a distance. The lens fits on to 1.5mm polymer fibre with a crimp termination and gives the effect of a bright 20mm dot of light. The lenses fit into an 8mm hole.



New Paver

With the same profile as the popular P1 paver, the **P19** adds an internal plano-convex lens to allow the light to be focussed while retaining the flat front face desirable in walk-over situations. The P19 fits a 36mm cutout.



lighting news from universal fibre optics

St Andrews Links Hotel

The Links Hotel in St Andrews is located conveniently for both the Old Course and the University and attracts a diverse clientele. Universal Fibre Optics were contracted to supply and install flexible decorative lighting for the interior of the 1 Golf Place restaurant and bar at the hotel. The lighting was required to provide ambience to suit both the daytime golfing customers and the evening student fraternity.

User-selectable colour changing is used to good effect and allows the area to be lit in a relaxing warm 3200K white light at lunch times. In the evenings, higher key primary colours are

used and the colour change can be set to a continuous scroll between the colours.

The fibre optics used were a mixture of glass fibre of 6mm and 7.5mm active diameter fed by Aurora 150W halogen and Compact 150W metal halide decorative light sources.

The fittings used to wash the walls and the bottles behind the bar are 11D adjustable downlights. Two large diameter P7 directional pavers uplight the bases of the arches. These fittings allow the fibre head to be angled to give the most even effect on the curving surface.

Stylish paver fittings

The UFO range of square pavers is ideal for architectural applications where it is desirable to either integrate with angular features or to contrast with flowing lines. Made from durable stainless steel with a finely machined finish, they are available with clear lenses for illumination or with frosted lenses to use as marker lights (frosted lenses are especially effective on stair risers).



Dimensions for the square pavers are: Flange: 38mm; 50mm; 62mm; 75mm
Cutout: 28mm; 36mm; 50mm; 62mm



Also available are larger versions of our best selling round paver, the P1. These have similar proportions but are ideal as marker or feature lights

as they give a larger disk of light.

The P11 is 62mm diameter with a 38mm lens for a 51mm cutout while the P12 is 75mm diameter with a 47mm lens for a 62mm cutout. Both are available with either clear or frosted lenses.



Sparkle effect in stone patio

Chimera Lighting Design of Newtown, Wexford designed outdoor lighting for a private residence in Ireland and specified Universal Fibre Optics to provide a sparkling starry effect in fibre optics for the patio area. The installation was by Stone Electrical of Redcross. This effect was achieved using a harness comprising 130 points of 1mm diameter polymer fibre, each sheathed in a protective material for outdoor use. The area required tails of up to 14m long. A UFO Aurora 100W light source provides the light and

has a slotted wheel to give a twinkling effect and is housed in a weatherproof enclosure located under the seating which can be seen on the photo to the right. The harness is supplied factory fitted into the enclosure. Sparkle Flush Lenses cap and protect the fibre at each light-point. These are made from polycarbonate for durability.

A similar looking but smaller installation could be realised using Unlimited Light Star deck kits. Call 01890 883522 for details or visit www.unlimited-light.com.



Universal Fibre Optics Ltd.

Home Place, Coldstream, UK - Tel: +44 (0)1890 883416 Fax: +44 (0)1890 883062
e-mail: info@universal-fibre-optics.com www.universal-fibre-optics.com

The only manufacturer of raw fibre for lighting in the UK.